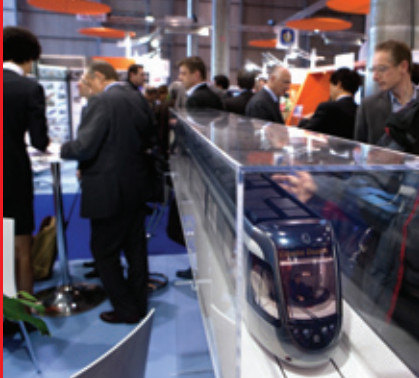




8th International Exhibition of Rail Technology

26–28 March 2013 • Lille Grand Palais Exhibition Centre, Lille, France





Your gateway to the rail market in France

Now a key event in the rail industry's calendar, SIFER offers an exceptional marketing opportunity for companies in four main industry sectors:

- Rolling Stock
- Infrastructure
- Passenger Transport Technology
- Rail Vehicle Interiors

As well as serving as a focus on innovation by suppliers, it is also a meeting place for policy-makers, train and public transport operators and manufacturers, combining presentations of the latest technological innovations with a stimulating programme of supporting events.

France maintains investment momentum

France has Europe's second-largest rail network – and one that is growing, with new high-speed lines (LGVs) continuing to head the list of investments. The current programme includes LGV Est Européen to Strasbourg, LGV Sud Europe Atlantique (Tours-Bordeaux), LGV Bretagne/Pays de la Loire (le Mans-Rennes) and the Nîmes/Montpellier bypass line. These will add 730 km to the network at a cost of €15.3 billion, and represent just a small part of the 4,500 km of high-speed lines planned under the government's *Grenelle de l'Environnement* programme.

Whilst improvements are also being made to the traditional network, SNCF continues to modernise its fleet of passenger rolling stock.

These factors combine to make France one of the world's most important markets for rail products and services. It is also a world-leading centre for innovation and technology in an industry that has to respond to new commercial and environmental challenges. SIFER exhibitors are at the forefront of technology, acknowledging that the show provides a unique opportunity for promoting new ideas.

Cooperation between companies is also a key feature of SIFER, especially for SMEs. An increasing number of regional groupings of smaller firms join the list of exhibitors each year, demonstrating that SIFER plays an important role in bringing together the skills and capabilities of suppliers to meet market needs.

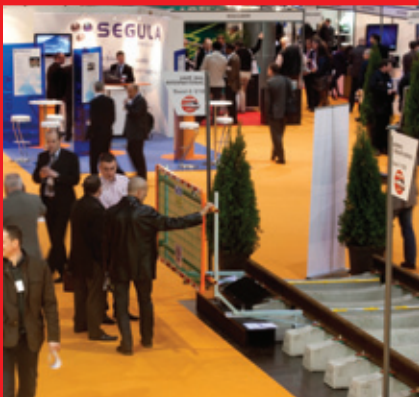
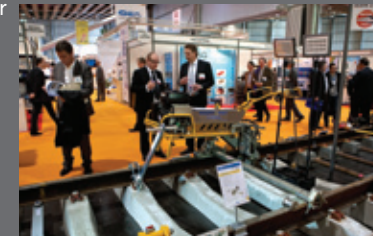
The French rail network

- More than 29,000 route-km, of which half is electrified
- 1,900 route-km of high-speed lines
- 3,000 stations
- 400 billion passenger-km annually
- 42 billion freight tonne-km annually
- Metro systems in 6 cities and light rail systems operational or planned in 26 cities and towns

On-Track Display at the heart of the show

The On-Track Display is an established and successful feature for exhibitors of infrastructure products at SIFER. Sections of track laid in the exhibition hall enable suppliers of rail-mounted vehicles and track-related equipment to display their products in an authentic setting.

Strong demand is expected for the On-Track Display. Early booking is recommended.





Why Lille?

The Nord-Pas de Calais/Picardie region forms the hub of the rail supply industry in France. Companies based there employ 10,000 people and account for 40% of national railway manufacturing activity. It is also home to the European Railway Agency.

The presence of major manufacturing sites of three of the world's leading railway suppliers provides an important industry focus that is boosted by strong support from Northern France Rail.

Trainium wins government funds

France is investing to maintain its leadership in railway technology. In 2011 Trainium, the European Institute for Technological Research in Rail Infrastructure, was awarded government funding of €550 million to set up a major research facility with a centre of excellence at Valenciennes and a secondary site at Lille. Trainium members include government bodies, regional government and leading rail industry companies.

Developed out of the i-Trans hub of transport expertise, the establishment of Trainium underlines the importance of cross-industry cooperation in the face of strengthening global competition – and provides a further boost to northern France as a centre of rail excellence.

Who exhibits at SIFER?

SIFER is the perfect platform for suppliers to present their latest products and services to the market's top buyers, specifiers and engineers. Typical exhibit categories include:

Rolling Stock

- Rail vehicle builders
- Suppliers of major subsystems
- Components manufacturers
- Maintenance and refurbishment

Infrastructure

- Track and civil works suppliers and contractors
- Signalling and communications
- Electrification
- Infrastructure maintenance

Passenger Transport Technology

- Passenger information systems
- Fare collection
- Data systems
- Passenger security and safety

Rail Vehicle Interiors

- Seating and interior fittings
- HVAC
- Lighting
- Sanitary systems

Who visits SIFER?

SIFER has achieved continuing success in attracting high-level visiting industry professionals. 4,400 senior managers, buyers and engineers attended the last show – managers and engineers with real purchasing and decision-making authority, prompting a high approval rating by exhibitors. Visitors of the exhibition are:

Rolling Stock

- Main line and urban rail operators and authorities
- Rail vehicle builders
- Suppliers seeking industry partners
- Maintenance and refurbishment companies

Infrastructure

- Network operators and authorities
- Construction and maintenance contractors
- Main line and urban rail operators and authorities
- Suppliers seeking industry partners

Passenger Transport Technology

- Main line and urban rail operators and authorities
- Network operators and authorities
- Suppliers seeking industry partners
- Transport planners and consultants

Rail Vehicle Interiors

- Rail vehicle builders
- Main line and urban rail operators and authorities
- Maintenance and refurbishment companies
- Suppliers seeking industry partners



The one-stop event for rail professionals

Underlining the key role played by SIFER as a meeting place for the rail industry, a broad ranging programme of events will take place during the exhibition.

- **Conference organised by i-Trans**, the technology hub that brings together rail industry leaders and research and training institutions serving the transport sector
- **Presentations by the Association des Industries Ferroviaires (AIF)**, which represents more than 100 companies in Nord-Pas de Calais
- **Conference and Grands Prix of the Regions Awards Ceremony**, organised by *Ville, Rail & Transports*, the definitive trade publication for the rail industry and new forms of mobility
- **Drop-in Technical Seminars** in the exhibition hall
- **Networking Reception** for exhibitors and visitors
- **Technical Visits** to sites of railway interest around Lille

More details will be published on the SIFER 2013 website closer to the show.

Participation in SIFER 2013

Registration fee per stand: €460

Space only – price per m²: €367

On-track space: €367 per linear metre
(minimum 3 metres)

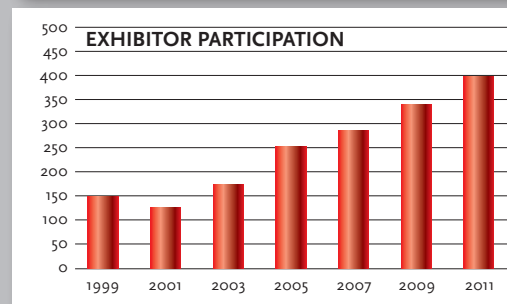
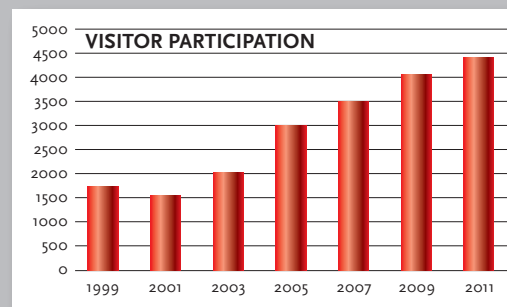
Please contact us if you need a furnished stand.

A snapshot of SIFER 2011

SIFER 2011 for the first time occupied three halls at the Lille Grand Palais exhibition centre. It broke all previous records by attracting:

- **400 exhibitors from 16 countries – 25% of these from outside France**
- **4,400 trade visitors from 41 countries – 16% of these foreign**

Exhibitors expressed high levels of satisfaction at the quality of visitors and the benefits of business done at the show.



SIFER 2011 exhibitors

4 NRJ	F	DEVISMES	F	J. LANFRANCO	F	ROCKDELTA	DK
ABB CONNECTORS LTD	GB	DI INGENIERIE	F	JARDOLY PRODUCTION	F	ROLLON LINEAREVOLUTION	F
ABB FRANCE	F	DIRECT	F	JEANTET ELASTOMERES	F	ROSENOVIST RAIL	S
ABTUS	GB	DUBUIS SAS	F	JEFMAG	F	ROY DEVELOPEMENT	F
ACE AUTOMATISMES DU CENTRE EST	F	DUPUIS MECANIQUE	F	JIANGHAI	F	RUSPA OFFICINE SPA	I
ACE INGENIERIE	F			JOINT LYONNAIS TECHNIQUES INDUSTRIELLES	F		
ACIERIES DE PLOERMEL INDUSTRIE	F	ECOLE DES MINES DE DOUAI	F	JSM INDUSTRIE	F	SACATEC	F
ACKSYS	F	EDILON SEDRA	NL	JST	F	SAFRA	F
ACOUSYSTEM	F	ELAG ELEKTRONIK	F	JURA FILTRATION	F	SAIB CONNECTIQUE	F
ACTIA-SODIELEC	F	ELECA	I			SAIT FRANCE	F
ACTIVE AUDIO	F	ELEKTRO-THERMIT	D	KAPSCHE CARRIERCOM FRANCE	F	SCHROFF	F
ADES TECHNOLOGIES	F	ELESTA RELAYS	F	KINGBRIGHT	F	SCHWAB SCHWINGUNGSTECHNIK	CH
ADES METROLOGY	F	EMILE MAURIN	F	KISTLER FRANCE	F	SCHWAB AG	CH
ADSP	F	EMITECH	F	KN SYSTEMES	F	SECTRONIC	F
AEG TRANZCOM	B	ENAG	F	KNORR-BREMSE	D	SEEB INDUSTRIE	F
AFR TITAGARH	F	ENERIA CAT	F	KONI ITT MOTION TECHNOLOGIES	NL	SEF INDUSTRIE	F
AIF F	F	ENGRENAGES CHANDIOUX	F	KONTRON AG	D	SEFAC	F
ALITRAK FRANCE (LOGIFLORE)	F	ENVIRONNEMENTECH	F	KRAUS ELEKTROTECHNIK	F	SEGULA TECHNOLOGIES	F
ALSTOM TRANSPORT	F	EOLANE	F	KROMA FÜLLSTANDSMESSTECHNIK	D	SEHLA	F
ALTPRO D.O.O.	CROATIA	EPCI	F			SEMELAB LTD	GB
AMECA ENGINEERING	F	EPCOS	F	LA FONDERIE CHAROLAISE	F	SENS TOLERIE	F
AMESCO	F	EPRA CONTACT	F	LA VIE DU RAIL INTERNATIONAL	D	SENSOR LINE GESELLSCHAFT	D
AMESYS GROUPE BULL	F	ERICO	F	LAF-LES APPAREILS FERROVIAIRES	F	SENSIOR	B
AMPHENOL AIR LB	F	ERVOR	F	LACASSE COMMUNICATION & INDUSTRIES	F	SERICAD	F
AMR	F	ESCHA TSL GMBH	D	LCSI	F	SERVA	F
ANGST & PFISTER SA	F	ESCHA-MULTIPROX	B	LE MOCI	F	SES STERLING	F
ARCELORMITTAL	B	EURALITEST	F	LE RAIL (GROUPE ACTIS)	F	SF FILTERS	F
ARCOM INDUSTRIE	F	EUROGAMMA SRL	I	LED & SOLAR	F	SGTE-PWER	F
ARDEX P/CARDI	F	EUROPEAN RAILWAY AGENCY	F	LEGIOS	CZ	SHENZHEN SED WIRELESS COMMUNICATION TECHNOLOGY CO LTD	CHINA
ARROW FRANCE	F	EUROP/MAINTENANCE	F	LEROY AUTOMATION - AXEAM GROUP	F	SIB ADR	F
ARTHUR FLURY AG	CH	EUROTECH	F	LIA-TECH	F	SIBILLE FAMECA ELECTRIC	F
ATAB	F	FAMATEC SPA	I	LILLE METROPOLE EUROPE	F	SIGNAL CONCEPT	D
ATEMO SYSTEME	F	FBO	F	LINTECH	F	SIRAIL	F
		FDI-	F	LOGIC INSTRUMENT	F	SILICOM GROUP	F
		FLERTEX	F	LOIRE ETUDE	F	SLTS	F
		FLEXA GMBH	D	LPA GROUP	GB	SM3A INDUSTRIES	F
		FOGTEC	D	LUPUS ELECTRO	F	SMA RAILWAY TECHNOLOGY GmbH	D
		FONDERIES DE BROUSSEVAL & MONTRIEUL	F	MAFELEC	F	SOCIETA ITALIANA RESISTOR (SIR)	I
		FORBO FLOORING	NL	MARQUARDT	F	SOCIETE INDUSTRIELLE DES FONTES	F
		FORGES DE FRESNES	F	MECQUE	I	SOGEMA ENGINEERING	F
		FORNIAL INDUSTRIES	F	MEDIANE SYSTEME	F	SOGO	I
		FOURNIER DAFORIB	F	MEGGER	F	SOJEP	F
		FRANCELOG	F	MEN MICRO ELEKTRONIK	F	SOLARI UDINE	I
		FREINRAIL	F	METAL CONTROL	F	SOLSITEC	F
		FRIEM	I	METALSCAN	F	SOLYTEK	F
				MICROELETRICA SCIENTIFICA SPA	I	SOMEPC TECHNOLOGIE	F
	USA	GAIA CONVERTER	F	MINERVA COOLING SYSTEMS	F	SOPAVAL	F
		GALLY	I	MINNESOTA RUBBER & PLASTIC	F	SORELEC	F
		GAMET PRECISION	F	MIRE	F	SORIDIS	F
		GASCARD MARTIN PROST	F	MOKLANSA	D	SOVAC	F
		GEATECH SPA	F	MONVOT	F	SRENCEUR MOULTON	F
		GERB SA	F	MORACO	F	SR- STC	F
		GETRASUR	F	MORPHO (GROUPE SAFRAN)	F	SRCI	F
		GETZNER	A	MORS SMITT	NL	STANLEY HYDRAULIC TOOLS	F
		GILLAM FEI	B	MOXA EUROPE	D	STAUBLI	D
		GLENAIR	F	MTM POWER	D	STEMMANN TECHNIK GMBH	D
		GOLDSCHMIDT THERMIT	D	MULTI CONTACT	F	STRAIL FRANCE	F
		GOLDSCHMIDT THERMIT FRANCE Sarl	F	MULTITEL ASBL	B	STRATIME COMPOSITE SYSTEMES	F
		GPIC	F			TE CONNECTIVITY	F
		GRANDO	B	NEOPOLIA RAIL CLUSTER	F	TECH POWER ELECTRONICS	F
		GREFFER	F	NEW VISION TECHNOLOGIES	F	TECHNI METAL SYSTEMES	F
		GROUPE KEPP TECHNOLOGIES	F	NEXTER ELECTRONICS	F	TECHNIFRANCE	F
		GROUPE SIMONIN	F	NFX	F	TECHNI-TEXT INGENIERIE	F
		GROUPE SOPEMEA	F	NIGHTSEARCHER LTD	GB	TECHNO LOGISTIQUE	F
		GUERIPREL	F	NILES-SIMMONS-HEGENSCHEIDT	D	TECHNOPOLE VALENCIENNOIS	F
				NKT CABLES	D	TECHNORD FRANCE	F
		HALGAND	F	NORD-LOCK FRANCE	F	TENCATE GEOSYTHETICS FRANCE SAS	F
		HARSCO RAIL	GB	NORTHERN FRANCE RAIL	F	TEXELIS	F
		HARTING FRANCE	F	NOWAK SAS	F	TITANOX	F
		HBM FRANCE	F			TJC-TOLERIE JANNIN-CARNET	F
		HEF-DURFERRIT	F	OCETA	F	TLTI	F
		HEGENSCHEIDT-MFD	D	ODU FRANCE	F	TOLECTRO	F
	CHINA	HELLERMANN TYTON	F	OKI / METCAL	F	TOYOTA TSUSHO EUROPE	F
	CHINA	HEUILLE	F	OUTOKUMPU OY	SF	TRAFAG	F
	CHINA	HEXAGON METROLOGY	F			TRANSRAIL CONNECTION 2012	F
		HEXIS	F	PANASONIC TOUGHBOOK	F	TREADMASTER	GB
		HUAXIN EQUIPMENT MANUFACTURING	F	PANOLIN	CH	TRELLEBORG INDUSTRIAL AVS	GB
		GROUP CO LTD	CHINA	PARENT	F	TRELLEBORG SEALING PROFILES	F
		HÜBNER GMBH	D	PARTEX	F	TRELLEBORG SEALING SOLUTIONS	F
		HYDRO 3M	F	PATENTES TALGO	F	TRONICO	F
	CHINA	HYPERTAC	F	PCMS	F	TT ELECTRONICS SAS	F
				PEINTAMELEC	F	TUBESCA	F
		IBRE	F	PINET INDUSTRIE	F		
	B	ICAM	F	PMA FRANCE	F		
	B	ICCO MATERIAUX COMPOSITES	F	POLAMCO FRANCE	F	VALOUTIL INTERNATIONAL	F
	B	ICE	F	POLAMCO LTD	GB	VAPE RAIL INTERNATIONAL	F
	F	IDEAL INDUSTRIES	F	POSEICO	I	VILLE RAIL & TRANSPORTS	F
	F	IFE	A	POSITRONIC INDUSTRIES	F	VOGEL & PLOTSCHER	D
	F	IFMA MECAPROD	F	POUCHARD TUBES	F	VOGELSANG MASCHINENBAU	D
	F	ILME FRANCE	F	PREFARAILS	F	VORTOK INTERNATIONAL	GB
	F	INDUREC	F	PROCAL	F	VTEC	D
	F	INDUSTREAM	F	PROTEAUX & CIE	F		
		INDUSTRON EUROPE	F	PVPA PROJECT MANAGEMENT	F	WAGO CONTACT	F
	CZ	INFODIO	F			WATLOW	F
	F	INGEROP	F	R.LEGRAND	F	WEIDMÜLLER	F
	E	INOFORGES	F	RAILTECH INTERNATIONAL	F	WELLER	F
	F	INOTEC	F	RAILWAY GAZETTE INTERNATIONAL	GB	WELWYN COMPONENTS LTD	GB
	F	INSTITUT DE SOUDURE	F	RAIMONDI SRL	I	WOLFF	D
	F	INTERMAS FRANCE SAS	F	RBC FRANCE	F		
	F	INTERNATIONAL RESISTIVE COMPANY INC	USA	REGION NORD PAS-DE-CALAIS	F	YDETEC	B
	F	INVEST IN NORTHERN FRANCE	F	REGIO INDUCTIVE COMPONENTS	D	YELLOW COMPONENTS	F
	F	IRMIE IMPIANTI SRL	I	RESEAU FERRE DE FRANCE	F		
	F	I-TRANS	F	RETIS SOLUTIONS	F		
	F	ITT INTERCONNECT SOLUTIONS (VEAM)	I	RGM SpA	I	ZÖLLNER	D
	D			RMT FRANCE	F		



Information and Reservation

MACKBROOKS
france

Romeland House
Romeland Hill
St Albans AL3 4ET
United Kingdom

Tel: +44 (0)1727 814 400

e-mail: sifer@mackbrooks.com

www.sifer2013.com

Supporting Organisations



Media Partners

